

LIGHT IN RELIGION BUILDING

Architecture is defined by the play of light and shadow. It gives character to architecture, without which its form, colour and texture cannot be recognized.

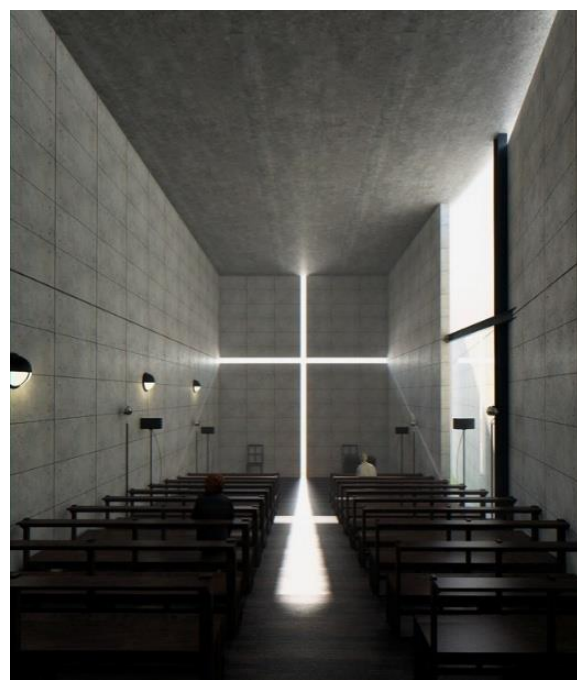
In Versune Architecture (Towards a New Architecture), Le Corbusier writes: "Architecture is the skillful, accurate and magnificent play of volumes seen in light."

Through the centuries man has learnt that light can be used to generate diverse feelings and create special experiences.

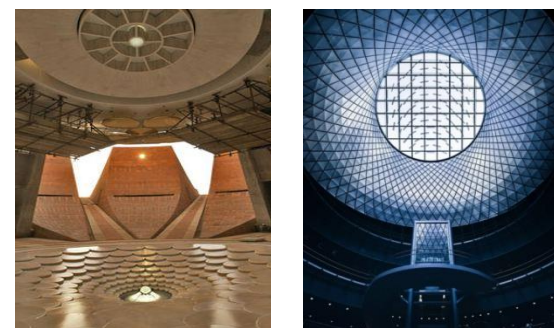


Religions have greatly exploited this quality in their structures. Light has been used in the sacred buildings, not only to provide the necessary visual condition for the ritual acts to be performed, but also to evoke mystical and spiritual feelings. The Greek and Hindu temples are both built to face east so that the deity in its dark chamber is illumined by the first rays of the morning sun.

The importance of light and darkness is dramatically presented in the opening sentences of the Biblical record, "In response to the darkness that was over the surface of the deep (Gen1:2), God spoke and light came into being."



Tadao Ando's Church of Light, which stands in a small town of Ibaraki, 25km outside of Osaka, Japan is a powerful contemporary architectural statement of the capabilities of daylight. This simple concrete structure is illuminated by a cross shape void in the east facing wall. The darkness of the pure unadorned interior is humble and meditative until it is altered by the light pouring in through the cross, creating a surreal spiritual effect. Schielke (2014) speaks of how different approaches for using light have been used to bestow symbolic meaning and spiritual experience in religious spaces. Light has been used successfully to evoke the ethereal and command attention and at times it has been curtailed to generate humility and fear.



LIGHT IN RELIGION BUILDING

NASA

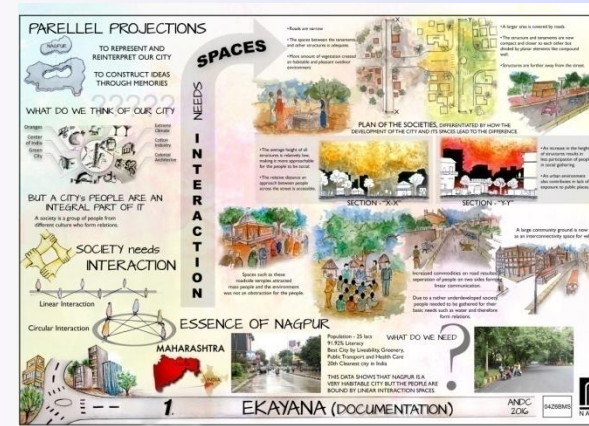
ZONALS held at SMEF'S BRICK SCHOOL OF ARCHITECTURE, PUNE (21-23RD October)



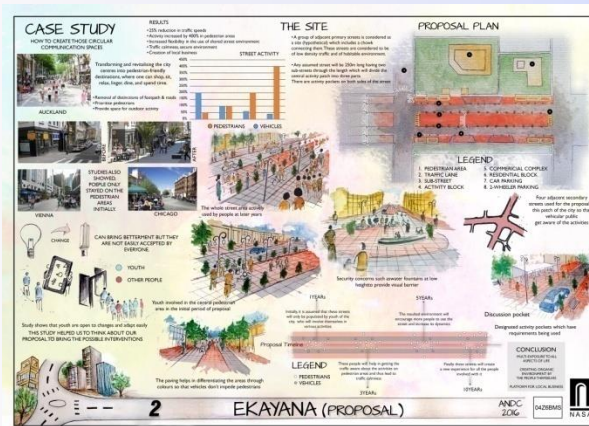
TGPCA delegates won a Special Mention 2 in Furniture Design and two On-the-Spot Competitions.



ANNUALS held at P.U.'s School of Architecture, Jaipur (16-20th January)



By qualifying in the ANDC trophy and making it to the top 100 list TGPCA participated in the Annual NASA.



WORKSHOPS & SEMINARS

BAMBOO WORKSHOP with artist-activist Shweta Bhattad of the Gram art project at Paradsinga village on Koradi Road.



LATERAL THINKING a lecture by Prof. Sarika Bahadure, Asst. Prof. at V.N.I.T., Nagpur

TALK SERIES imparting information on a variety of general topics



Prof. Renuka Bhoje, former faculty at SPA, Delhi on Open Avenues to Further Education

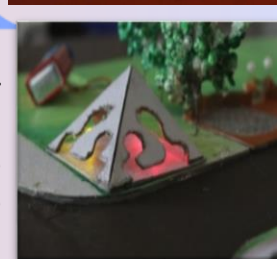


Experiences of Life by Rotarian and engineer **Mr. Sharad Bhawe**, Coordinator, Department of Business Management, C.P. & Berar E.S. College

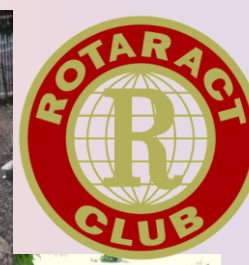
ACTIVITIES

DESIGN CELL

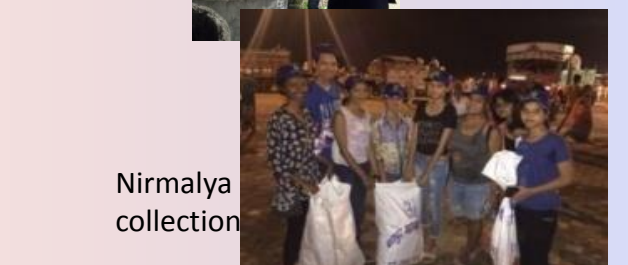
Tulsiramji Gaikwad-Patil College of Architecture Design Cell has been appointed by AIRPORT AUTHORITY OF INDIA (A.A.I), NAGPUR to provide a design proposal for beautification and emphasize of the entrance road and gate to the Air Transit System (A.T.S.) building situated on the road connecting highway NH-7 to the Dr. Babasaheb Ambedkar International Airport, Nagpur.



Swachhata Abhiyan



Tree Plantation



Nirmalya collection

CANTEEN DECORATION



3d poster design competition representing the different isms

AARAMBH: A WELCOME TO FIRST YEAR



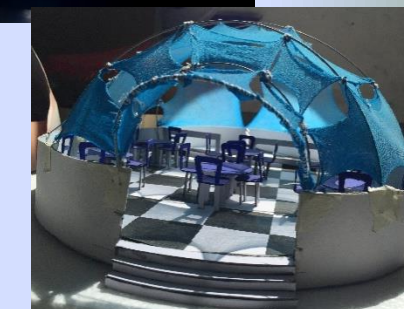
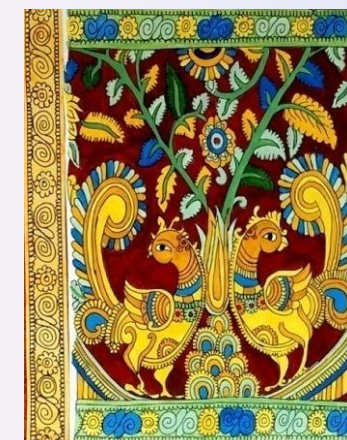
COMPETITION HELD IN MEMORY OF RENOWNED ARTIST S.H.RAZA Representing 'Bindu' in physical form and through photographs.



FIRST STEPS YEAR



The program begins with an introduction to the history of art and architecture and to the basics of the profession. Initial studio assignments develop communication skills—verbal, graphic, and written—that enable students to navigate their field while also introducing them to the elements that comprise architecture—surface, wall, door, opening, stair, room.



The students are introduced to fundamental aspects of building: space, structure, materials, and construction. With an emphasis on the exploration of the human proportions, the initial studio assignment was the study of a small residence followed by canteen design.



FIRST YEAR STEPPING STONES



TULSIRAMJI GAIKWAD-PATIL
COLLEGE OF ARCHITECTURE
 Wardha road, Nagpur-441108
 E-mail:tgpcanagpur@gmail.com
 Website: www.tgpcanagpur.com

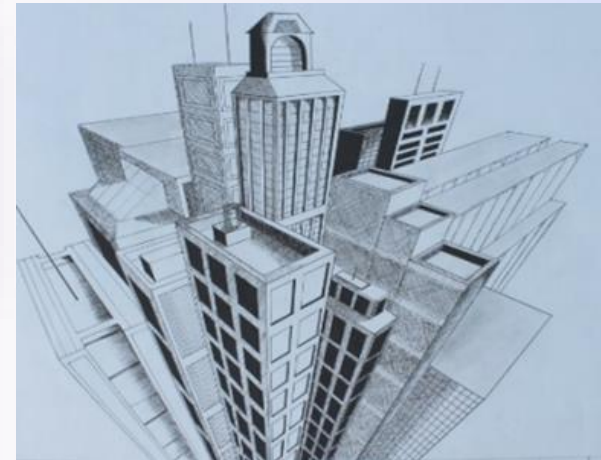


ANNUAL MAGAZINE

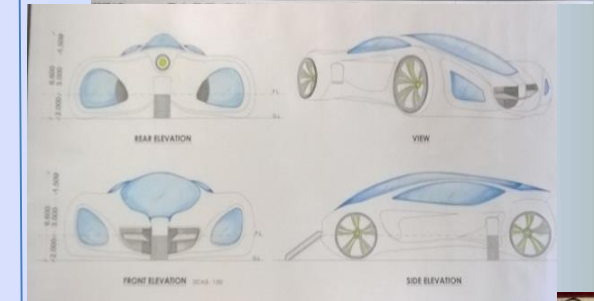
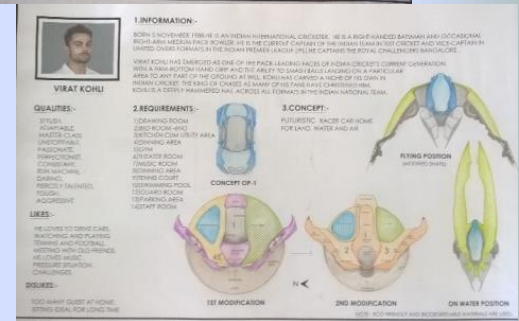
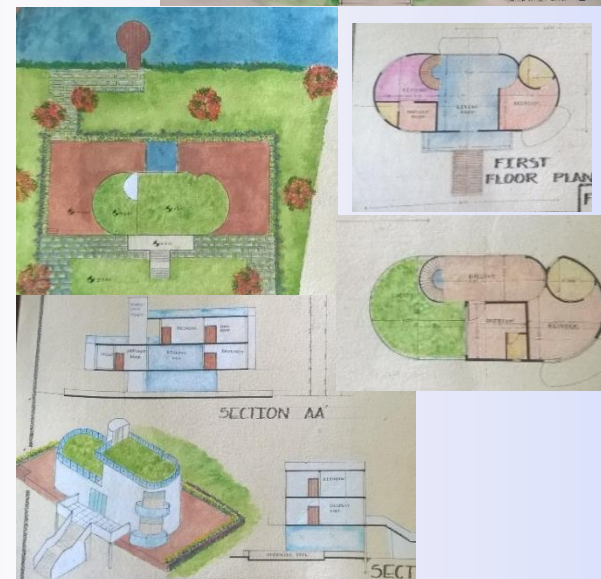
SKYLIGHT - 2017



SECOND STEPS YEAR



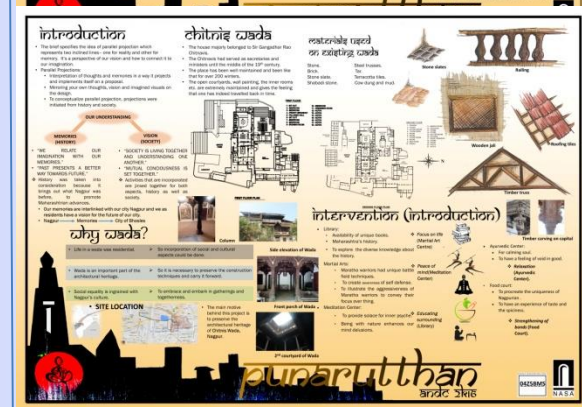
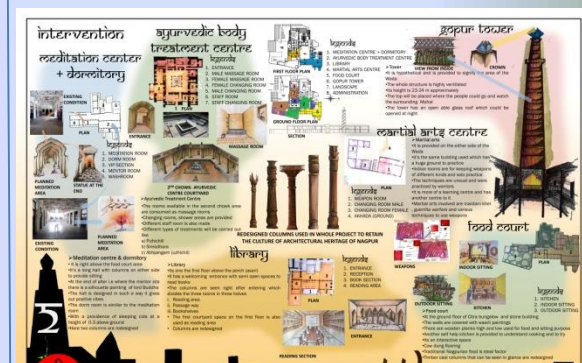
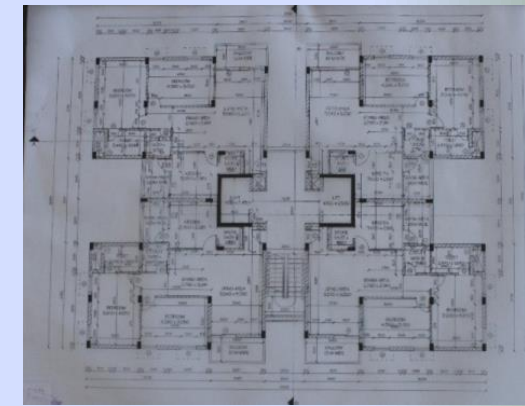
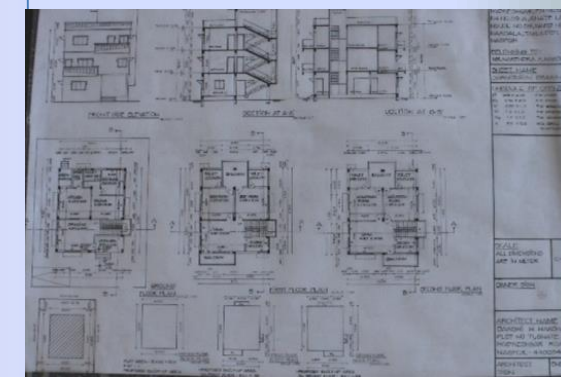
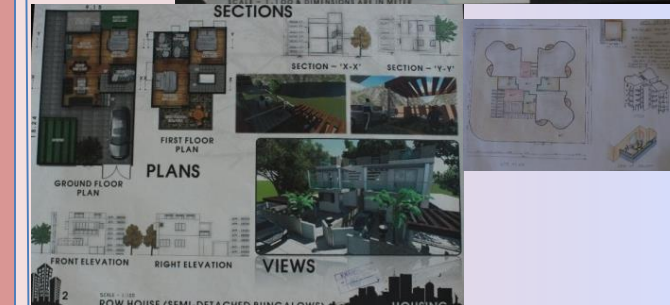
The second year studio introduces complexity in circulation with the study of mix-use buildings. The students begin to explore modular coordination in spatial organization and are made to develop sensitivity to climate in architecture. The studio assignments includes school design and



SECOND STEPS YEAR

THIRD STEPS YEAR

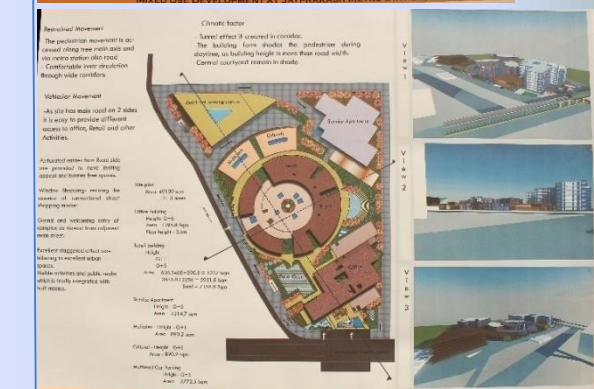
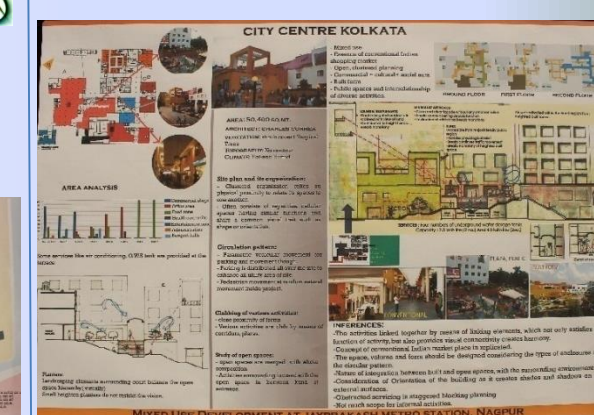
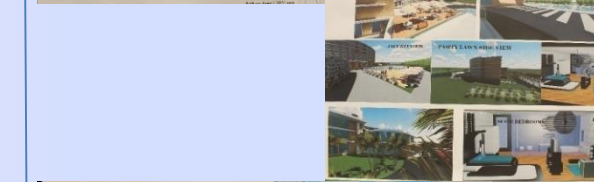
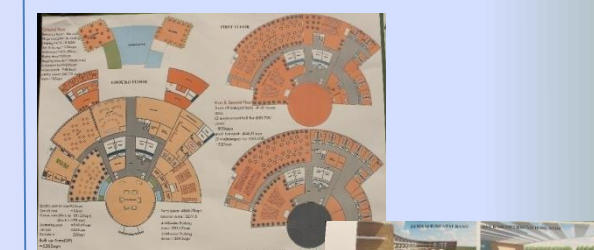
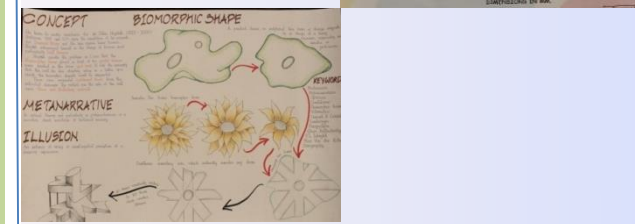
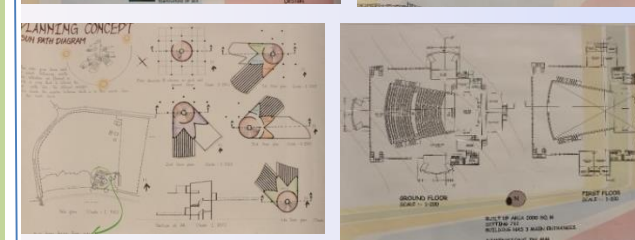
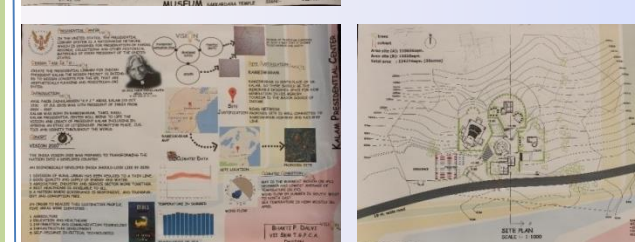
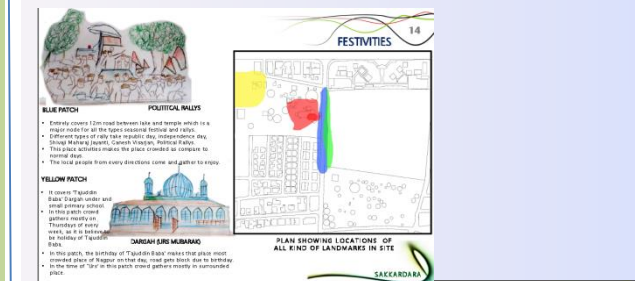
The third year studio moves beyond the single unit to consider the spaces between buildings and the impact of site on architecture. The students are introduced to city regulations and sensitized to effect of climate. The assignments included assignments included



THIRD STEPS YEAR

4th & 5th STEPS YEAR

The fourth year of the studio sequence is focused on the interface of building with the urban environment.



FINAIPS YEAR

VISION

Our vision is to fabricate a generation of creative and professional architects, without outstanding capabilities and sincere intentions; and ultimately advance the wellbeing of the people of India.

MISSION

We recognize that Architecture is the measure of the true growth of a society.

Our mission is to strengthen this vital aspect of our country.

We aim to:

- Build social skills through healthy competition
- Build confidence and shape personal opinions.
- Create awareness of real life challenges
- Stimulated with personal freedom to explore and experiment
- Encourage community work that adds value and meaning to their lives.



TULSIRAMJI GAIKWAD-PATIL
COLLEGE OF ARCHITECTURE

Admission

DURATION OF THE COURSE

The architecture (B.Arch.) course is of five academic years / 10 semester duration inclusive of 12months / 2 semesters of practical training in a architecture firm / professional office.

ADMISSION AND APTITUDE TEST

The candidates admitted to first year of B. Arch Five Year course must have passed the National Aptitude Test in Architecture administered by COA and register with DTE.

ELIGIBILITY

For admission in B.ARCH course candidate must have passed any one of the examination with minimum 50% aggregate marks and with mathematics as one of subjects of examination.

I) 10+2 higher secondary certificate examination (HSSC)

OR

II) 10+3 diploma in any stream recognized by Central or State government board of technical education.

OR

III) International Bachelor diploma after 10 years of schooling.